

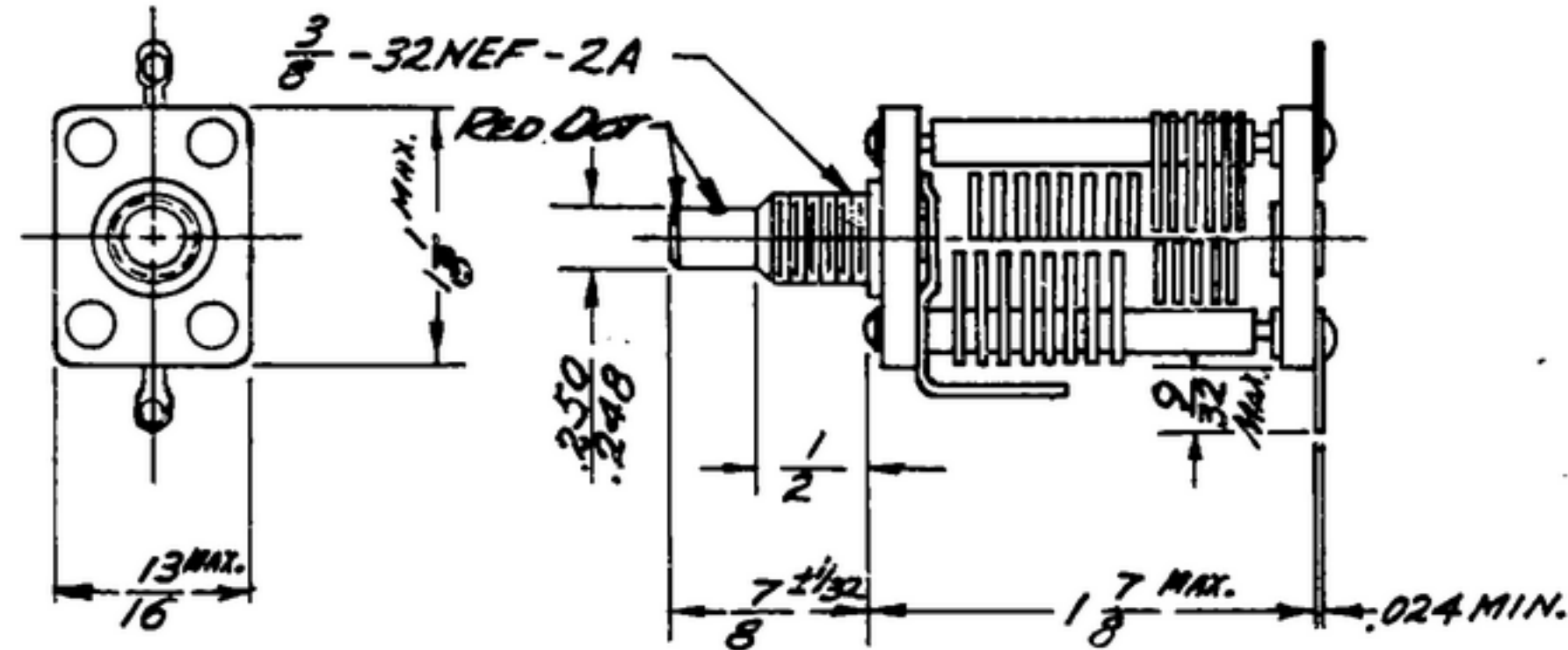
NOTICE: WHEN GOVERNMENT DRAWINGS, SPECIFICATIONS, OR OTHER DATA ARE USED FOR ANY PURPOSE OTHER THAN IN CONNECTION WITH A DEFINITELY RELATED GOVERNMENT PROCUREMENT OPERATION, THE UNITED STATES GOVERNMENT THEREBY INCURS NO RESPONSIBILITY FOR ANY OBLIGATION WHATSOEVER, AND THE FACT THAT THE GOVERNMENT MAY HAVE FORMULATED, FURNISHED, OR IN ANY WAY SUPPLIED THE SAID DRAWINGS, SPECIFICATIONS, OR OTHER DATA IS NOT TO BE REGARDED BY IMPLICATION OR OTHERWISE AS IN ANY MANNER LICENSING THE HOLDER OR ANY OTHER PERSON OR CORPORATION, OR CONVEYING ANY RIGHTS OR PERMISSION TO MANUFACTURE, USE, OR SELL ANY PATENTED INVENTION THAT MAY IN ANY WAY BE RELATED THERETO.

THIS DOCUMENT HAS BEEN PURCHASED BY THE GOVERNMENT AND MAY BE REPRODUCED AND USED IN CONNECTION WITH ANY GOVERNMENT PROCUREMENT OR MAINTENANCE OPERATION.

* FOR INFORMATION ONLY. CONTRACTOR MAY AT HIS OPTION DEVIATE FROM THESE PROCESS DETAILS.

REVISIONS

SYM	DESCRIPTION	DATE	APPROVAL
A	A, - IN NOTES: MIL-STD-202 & MIL-C-92 WERE QQ-H-151/JAN-C-52 RESP.	9 OCT 59	A2428-PC-59 PME
B	B, - ADDED TERMINAL M 317 "	28 JUN 60	A2428-PC-59 PME
C	C, - ADDED TORQUE NOTATION.	16 OCT 60	A2428-PC-59 PME



(A)

NOTES:

- PART MAY BE NO. DE-1, AS SUPPLIED BY ALL STAR PRODUCTS, DEFIANCE, OHIO, OR EQUAL, PROVIDING IT MEETS THE FOLLOWING REQUIREMENTS AND DIMENSIONS SHOWN.

DESCRIPTION: DUAL SECTION VARIABLE AIR CAPACITOR.

INSULATION: STEATITE, GRADE L-4B OR BETTER IN ACCORDANCE WITH SPEC JAN-1-10.

METAL PARTS: SHAFT AND BUSHING. BRASS: PLATES AND BARS, ALUMINUM OR BRASS. FINISH: BRASS M262, ALUMINUM PLATES AND BARS, IF USED, ES13 AFTER ASSEMBLY.

TERMINALS M317 PER SPEC. MIL-F-14072. CAPACITY PER SECTION:

	CAPACITY--UUF		TOLERANCE
	MAX.	MIN.	
FRONT	7	6	±4
FRONT REAR	8	26	±2

SALT SPRAY: CAPACITORS SHALL WITHSTAND A 48 HOUR SALT SPRAY TEST IN ACCORDANCE WITH MIL-STD-202, METHOD 101 TEST B WITHOUT SHOWING SIGNS OF EXCESSIVE CORROSION, AND SHALL BE ELECTRICALLY AND MECHANICALLY OPERATIVE AFTER THOROUGH WASHING AND DRYING.

HUMIDITY: CAPACITORS SHALL WITHSTAND TEMPERATURE AND HUMIDITY TESTS PER SPEC MIL-C-92 WITHOUT EXCESSIVE CORROSION AND WITHOUT IMPAIRING THE OPERATION OF THE UNITS.

BEGINNING OF CAPACITY INCREASE OF EACH SECTION SHALL BE WITHIN ±5° OF THE OTHER SECTION.

RED DOT SHALL APPEAR ON THE SAME SIDE OF SHAFT AS LARGE ROTOR SECTION WITHIN 1/8" OF BUSHING, AND IN LINE ON END OF SHAFT. THE GENERAL CONSTRUCTION SHALL CONFORM TO THE INTENT OF REQUIREMENTS OF SPEC MIL-C-92 STYLE CT12.

(C)

TORQUE : 2.5 OZ.-IN. MINIMUM, 7.5 OZ.-IN. MAXIMUM

** WHEN PART NO. APPEARS AS 559 0418 92, MULTIPLE SOURCE INSPECTION IS REQUIRED*

COLLINS PART NO.	ITEM	REQD	PART NO.	DESCRIPTION	MATL	MATE SPEC
LIST OF MATERIAL						
COLLINS PART NO. <i>559 0418 003</i>						

DRAWN <i>RAH</i>				CHECKED <i>BG</i>		APPROVED		-COLLINS-RADIO CO.- -DESAR-RAPIDS-IOWA- <i>14214-PH</i> <i>51-93</i>		DEPARTMENT OF THE ARMY SIGNAL CORPS ENGINEERING LABORATORIES FORT MONMOUTH NEW JERSEY	
UNLESS OTHERWISE SPECIFIED: DECIMAL DIMENSIONS INCLUDING HOLE SIZES MAY VARY ±.005 FRACTIONAL DIMENSIONS INCLUDING HOLE SIZES MAY VARY ±1/64 MACHINED ANGLES MAY VARY ±1° SHEARED ANGLES MAY VARY ±25° BROKEN ANGLES MAY VARY ±1° ECCENTRICITY BETWEEN ANY DIAMETERS ON THE SAME CENTERLINE SHALL NOT EXCEED .010 TOTAL INDICATOR READING. ALL DIMENSIONS ARE FINISH DIMENSIONS INCLUDING APPLIED FINISH AND ARE GIVEN IN INCHES.				REVIEWED <i>PME</i>		APPROVED <i>HLV</i> <i>PME</i>		DATE <i>18 JAN 56</i>			
APPLICATION				559 0418 003		1		5M-C-240962		56 DEC 28 1952	
COLLINS NO.				QTY		NEXT ASSY		USED ON			